



STRATA

SUPERIOR WELDING PRODUCTS



EZIMIG 185C

180A COMPACT SYNERGIC MIG / MMA INVERTER WELDER

Ultra compact and easy to use the EZIMIG185C multi-process MIG welder is a must have for today's industrial professional. With the latest IGBT inverter technology, extreme stress testing to 440V and insulation class IP23, this machine is built to last.

- IGBT Inverter Technology for smooth & stable welding output and increased reliability
- Synergic MIG operation with Parameter Save/ Recall Intuitive and simple setting of controls for consistent weld results
- MIG Inductance & Burnback Control for greater control for MIG welding operation
- Spool Gun Connection w/ Remote Control for effective results welding with soft wires such as Aluminium and MIG brazing with bronze wires.
- Lightweight & Compact Design, ideal for portable applications
- Adjustable MMA Hot Start & Arc Force Functions
- Industrial IP23 casing with front panel protection for great resistance to damage, moisture and corrosion
- Lift TIG Welding Operation ideal for precision and aesthetically important welding jobs
- Dual Digital Display Meters allow for accurate pre-setting and feedback of welding parameters & output.
- 2T/4T/ Spot Weld Trigger Control
- Metal Chassis Wire Feeder Smooth and consistent wire feed.
- Digital Microprocessor Control System for Superior & Dynamic Arc Characteristics
- Extreme stress testing to 440V in production for rugged reliability.
- Reversible Polarity MIG Welding Operation Suitable for gas & gasless MIG welding.
- High Quality & Over Specified Electronic Components for Superior Durability & Reliability
- Intelligent Protection System with temperature, voltage and current sensors for increased reliability & safety
- Generator Friendly - Designed to work with generator power supply and protect from power surges.
- Quick connect inlet gas fitting

15 AMP PLUG	CONSTANT CURRENT/ VOLTAGE	DIRECT CURRENT	LCD SCREEN	230V 50HZ SINGLE PHASE	SPOOL GUN READY	INTELLIGENT PROTECTION SYSTEM	IGBT INVERTER TECHNOLOGY	SPIKE/ GENERATOR SAFE	CORROSION RESISTANT
-------------	---------------------------	----------------	------------	------------------------	-----------------	-------------------------------	--------------------------	-----------------------	---------------------

DIMENSIONS (LxWxH)	WEIGHT	INPUT POWER SUPPLY	INPUT POWER SUPPLY TOLERANCE	MAXIMUM INPUT CURRENT	GENERATOR CAPACITY	MIG OUTPUT VOLTAGE	MIG OUTPUT CURRENT	MIG DUTY CYCLE	WIRE FEEDING SPEED	MMA CURRENT OUTPUT	MMA O/C VOLTAGE
460 x 190 x 360 mm	11kg	230V AC 10A 50/60Hz	230V±10%	26A	7KVA	16 - 23V	40 - 180A	180A@15% 130A@60% 100A@100%	2 - 15 m/minute	10A - 160A	65V

MMA DUTY CYCLE	INSULATION CLASS	POWER EFFICIENCY	POWER FACTOR	STANDARDS	MIG DRIVE ROLLERS AVAILABLE	MIG WIRE SPOOL SIZE	WELD THICKNESS	MMA ROD SIZE	WARRANTY
160A@10% 130A@60% 100A@100%	IP23	85%	0.65	EN60974-1: 2012	V Groove: 0.6/0.8/0.9/1.0mm Knurled: 0.8/0.9mm	D200mm / 5KG	10mm	1.6 - 3.2mm	24 months








STRATA

SUPERIOR WELDING PRODUCTS



EZIMIG 185C MIG WELDING ACCESSORIES & CONSUMABLES

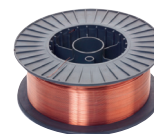
- Standard ● Optional
☆ Common Consumables

ACCESSORY:	EZIMIG 185C
Arc Leads 	○ AAL3550
Earth Leads 	○ AEL3550
MIG Torch 	○ MT250-4E
Argon Regulator 	○ GR102ARFL
Gas Hose 	○ GH08
MIG Starter Kit	● MB25KIT
DC TIG Starter Kit	● DCKIT
TIG Torch	● TW26V-12-2D
Spool Gun	● SP240P
Drive Roller 'V' Groove 0.6 - 0.8mm	○ TB17270 (x 2)
Drive Roller 'V' Groove 0.9 - 1.0mm	○ TB17271 (x 2)
Drive Roller 'V' Groove 1.0 - 1.2mm	● 17837 (x 2)
Drive Roller Knurled 0.8 - 0.9mm	○ TB17272 (x 2)
Drive Roller Knurled 1.0 - 1.2mm	● 17839 (x 2)
Drive Roller Knurled 1.2 - 1.6mm	● 17840 (x 2)
MIG Tips (MMT) 0.6 - 1.6mm	☆ 0.6, 0.8, 0.9 1.0, 1.2, 1.6mm
MIG Shrouds (MCN) 70 = Conical 71 = Cylindrical	☆ MTA2570 MTA2571
Tip Adaptors (MTA) 81 = M6 82 = M8	☆ MTA2581 MTA2582

Mild Steel MIG Wire - ER70S-6

- Copper coated MIG wire for general purpose welding of mild steel using CO² or argon based shielding gases.

CODE:	DESCRIPTION:
MW5KG06	5kg Spool - 0.6mm MIG wire (D200)
MW5KG08	5kg Spool - 0.8mm MIG wire (D200)
MW5KG09	5kg Spool - 0.9mm MIG wire (D200)
D300 MW15KG08S	15kg Spool - 0.8mm MIG wire (D300)
D300 MW15KG09S	15kg Spool - 0.9mm MIG wire (D300)
D300 MW15KG10	15kg Spool - 1.0mm MIG wire (D300)
D300 MW15KG12	15kg Spool - 1.2mm MIG wire (D300)



Welding Magnets

WT-WMG03	3" Welding Magnet
WT-WMG05	5" Welding Magnet



Chipping Hammer

- Heavy duty chipping hammer for the trade

WT-SPCH	Spring Handle Chipping Hammer
---------	-------------------------------



Automatic Welding Helmets

- Variable Shade • Complete with batteries ready to go
- Suitable for automotive DIY and industrial use.

SV3000	Auto Welding Helmet, Shade 5 - 13 + Grind Function (MIG/TIG/MMA/Plasma)
SV4000	Auto Welding Helmet, Shade 4 - 13 + Grind Function (MIG/TIG/MMA/Plasma)
DW7000XL	Auto Welding Helmet, Shade 5 - 13 + PRSL Filtration System (MIG/TIG/MMA/Plasma)



SV3000



SV4000



DW7000XL comes with battery powered air respirator.